

A Tier 1 newbuild, designed for the North Sea

XL Conventional Jack-up Installation

The "Seal" jack-up is based on GustoMSC's NG-20000X MOW vessel design: a proven XL jack-up vessel model, designed to serve the growing European wind energy market.

Its size and ultra-strength have been engineered with North Sea operations in mind, addressing the shortage of vessels capable of installing the next generation of WTGs in harsh conditions.



Key Features

- Capable of loading up to 6 sets of 15MW WTGs or 4 sets of 20+MW WTGs.
- Capable of functioning in water depths of ≤ 70 m
- 3,200t crane with 180m lifting height above deck
- 10 knots transit speed
- Shorepower connection and biofuel-compatible engines can reduce fuel and CO₂ emissions
- Technical capability for foundation installations



TECHNICAL SPECIFICATIONS

General

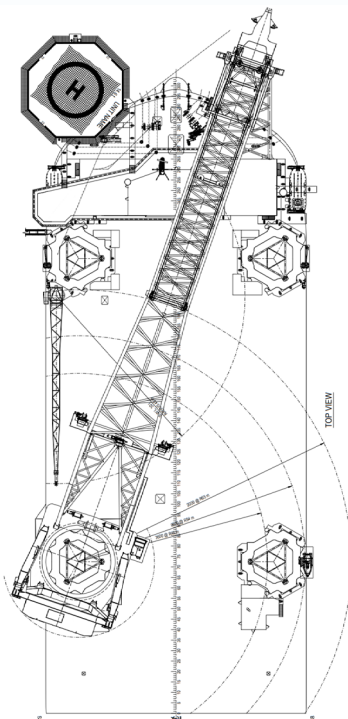
Delivery	TBA
Shipbuilder	TBA
Ship design	Gusto MSC NG-20000X MOW
IMO	TBA
Call sign	TBA
Engine builder	TBA (Tier 1)
Flag	Danish
Class	DNV
Class notation	DNV ✕ 1A Self-Elevating Wind Turbine Installation Unit, Crane Unit, DYNPOS(AUTR), NAUT(OC), Clean(Design), Shore Power, Recyclable, E0, BIS, Battery(Power), HELDK (SH), SPS, COMF-V(3)C(3)

Dimensions

Overall length	146 m (without Helideck)
Breadth	62 m
Moulded depth	12.0m (main hull)
Max. Draft (VDL)	8.25m (hull)
Min Draft	7.25m (including spudcan)

Main Engines & Propulsion

Main generators	Diesel electric 2 pcs @ 5,790 kW + 2 pcs @ 4632 kW
Batteries	4 MWh
Main propulsion	4 pcs Azimuth aft thrusters – 4,000 kW 1 pcs Azimuth bow thruster – 3,500 kW 3 pcs Tunnel thrusters – 3,000 kW
Dynamic positioning	DP2
Design speed	10 knots, 8.5 knots fully loaded
Emissions	Imo tier III



Jacking System & Deck

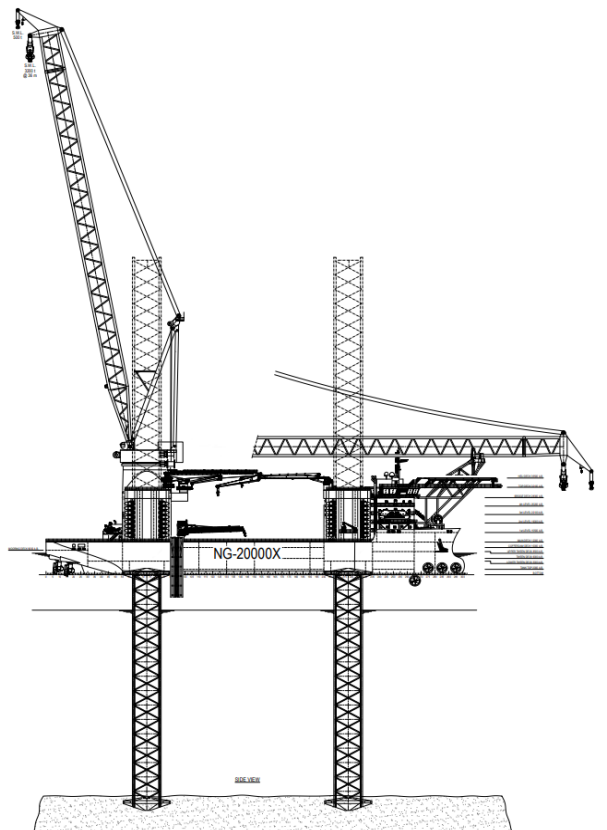
System (NOV)	Rack & Pinion, VFD
Max elev. weight	48,500t (jacking)
Deck	5,800 m ²
Leg length incl. Spudcan	125m; max. 90m /b hull
Spud cans	4 @ 230 m ²
Max. Spudcan load	90 t/m ²
Max. Variable deck load	17,250+ t
Max. Deck load	10 t/m ²

Crane

Make	TBD (NOV or Huisman)
Capacity	3,200t
Lifting Height above deck	180m
Radius at max. capacity	36.5m
Whip hoist (above deck)	180t@min radius
Aux cranes (#2)	1x40mt@50m, 1x10mt@32m

Accommodation & Access

POB	120 Accommodations
Office (preliminary)	3 client office, 2 conference rooms
Heli Deck	Yes
Walk-to-work	40m gangway (self-deployed)



* As of April 2026, all figures and data are believed to be correct, but cannot be guaranteed.

Please note: while the vessel design is still being finalised, the specifications and images are provisional only